

030-2650  
Motor Home Entrance  
Door Hardware—Rotary



Designed for motor home and fifth wheel trailer entrance doors, this new product is a redesign of our 030-1000/030-1050 Motor Home Entrance Door Hardware. It features easy installation through sandwich mounting, a reliable direct release rotary latch which is compliant to FMVSS 206, a built-in deadbolt for additional security and is power lockable.

**DESIGNED FOR:**

- Motor home entrance doors with thickness of 1.390" (35.3mm) to 1.78" (45.2mm) (Different inside plates are required to facilitate range of door thicknesses. Please identify when inquiring.)
- Fifth-wheel trailers, pull-type trailers and slide-in campers
- Door seal pressures of 40 lbs. or less for ease of function and maximum life
- Right hand applications
- Door requiring resistance to water and dirt infiltration
- Use with TriMark 070-0100 Striker Bolt

**Global Locations:**

**TriMark Corporation**  
500 Bailey Avenue  
P.O. Box 350  
New Hampton, Iowa 50659  
United States  
Tel: 641-394-3188  
Fax: 641-394-2392  
1-800-447-0343  
www.trimarkcorp.com

**TriMark Europe**  
Cedar Court  
Walker road  
Bardon Hill  
Coalville LE67 1TU  
United Kingdom  
Tel: +44(0)1530 512460  
Fax: +44(0)1530 512461  
www.trimarkeu.com

**TriMark (Xuzhou)**  
Building A5 Jingwu Road  
Xuzhou Economic  
Development Zone  
Xuzhou, Jiangsu  
221004 PR China  
Tel: +86 516 8773 0018  
Fax: +86 516 8773 0058  
www.trimarkcn.com



TriMark. Interactive. Product. Selector



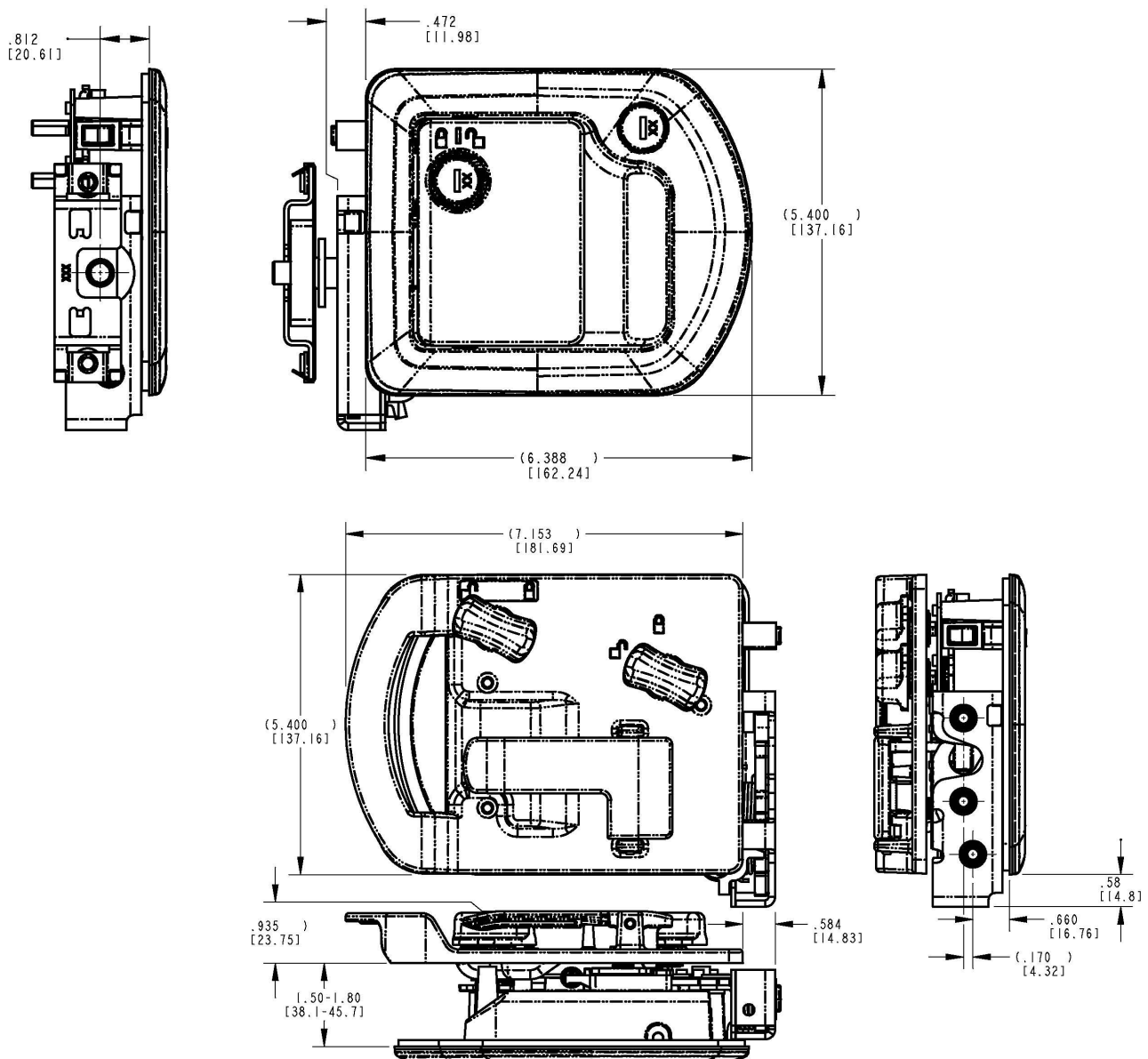


- Inside release is low profile .940" (23.9mm) to allow for close-fitting screen doors
- Paddle can be locked before door is shut
- Paddle is rigid when locked
- Automotive styling
- Comfortable finger access
- Inside assist with open bail for easy closing
- Can be keyed to match other TriMark door products with KeyOne™ Plus for a single-key system, keyed alike or provided non-locking



- Built-in deadbolt eliminates the need for add-on residential type deadbolt (deadbolt option)
- Deadbolt locks into the fully extended position for true deadbolt functioning (deadbolt option)
- Ability to be used with power actuation for locking (deadbolt option)
- Deadbolt cylinder non-removable when locked for added security

- With optional built-in deadbolt
- Master keyed paddle key cylinder
- Without key cylinders for matching entire vehicle cylinders after installation





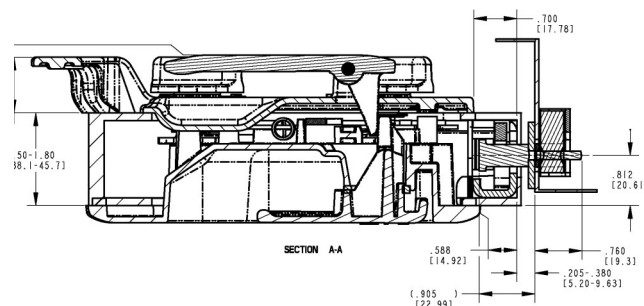
- Housing, inside plates, handles, plunger bolt, deabolt, locking components including lock knobs: die cast zinc alloy

- Black powder coated
- Copper-nickel-chrome plated
- Other finishes available upon request

- (3) #10-24 mounting screws (not included). Recommended torque 10 in-lbs (1.1 N-m)
- Supplied with gaskets already installed
- Sandwich mount installation does not require any linkage rods
- Power actuators, power actuation mounting brackets and rods are available for optional power actuation of locks. Please inquire.

**U.S. Design Patent No. D674,678 / D676,304**

Individual part dimensions are for reference only. Refer to individual part drawings for complete dimensions, specifications, and installation procedures. Engineering assistance and application drawings are available.



**CAUTION:** Applications of this system may fall within the requirements of FMVSS 206 and SAE J839 safety standards. These safety related requirements are dependent on door application, e.g. front and rear hinged doors, sliding doors, or hinged upward swinging doors. The entire door hardware system must be included in the design/analysis process: latch, handle, lock mechanism, cables/rods/linkages, fasteners, hinges, etc. This ensures compatibility of all components within the hardware system. If FMVSS 206 is a requirement, then all of the components within the door system must comply with strength, inertia and locking requirements as specified within the Standard. Note that this product complies with FMVSS 206 when tested in accordance with SAE J839 and that this system meets FMVSS 206 load and locking requirements and may be used in FMVSS 206 applications pending TriMark application approval.